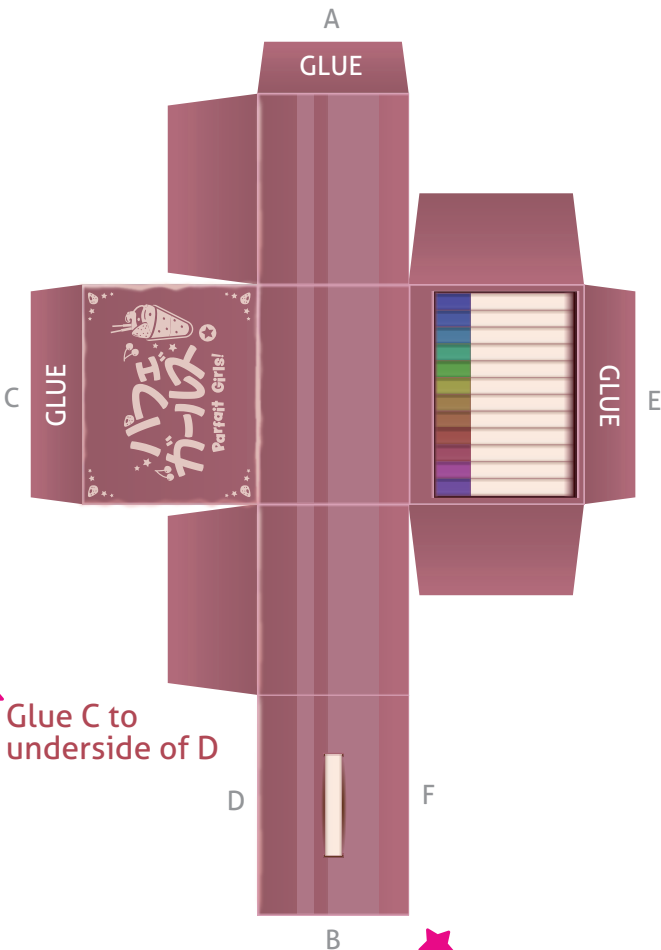


★ Fold at creases in the artwork.

★ Glue A to underside of B



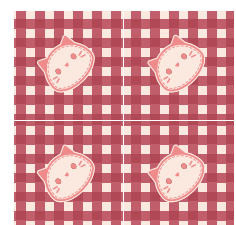
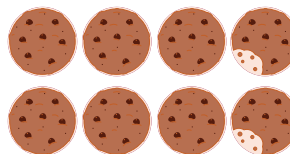
★ Glue C to underside of D

★ Glue E to underside of F

### Notes:

Cardstock is recommended, especially for the buildable papercraft manga box.

When putting the box together, you can use your preferred type of glue (or even tape, if you like!). A glue stick, liquid school glue, or double-sided tape work pretty well for this project.







## Oven Mitt & Apron



These designs are intended for use with iron-on transfer paper to create the items with fabric

Recommendations: Iron-on transfer paper for dark fabrics and a thin material that doesn't fray easily (i.e. flannel or jersey)

How to Make:

- 1. Print oven mitt & apron on transfer paper
- 2. Iron design onto fabric according to directions provided with the transfer paper
- 3. Carefully cut out apron and oven mitt. Cut the oven mitt slightly outside of the transferred design (~1mm) for seam allowance. Once cut, the apron is ready to use!
- 4. Sew oven mitt halves together using a blanket stitch or whip stitch. Be sure not to stitch the opening closed!

Apron



Ovenmitts



Napkins

