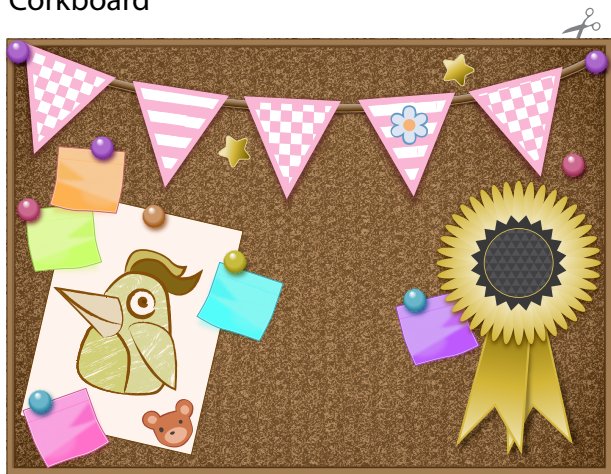


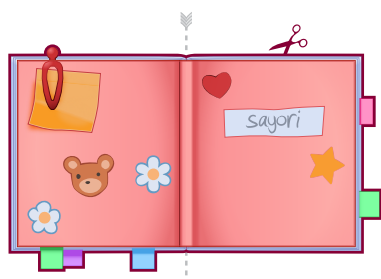
Solid Lines Mean Cut ✂️
Dotted Lines Mean Fold ➡️-----

G = GLUE

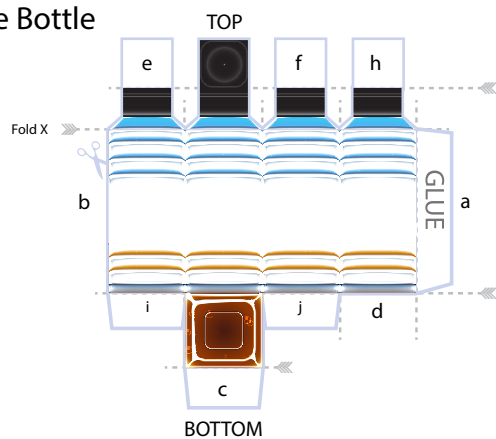
Corkboard



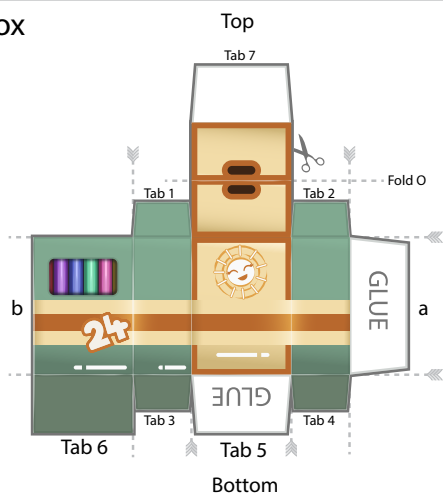
Sayori's Journal



Juice Bottle



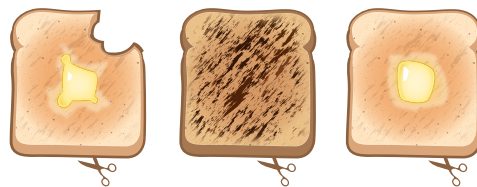
Crayon Box



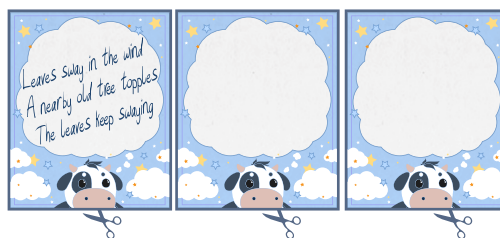
Pennant Banner



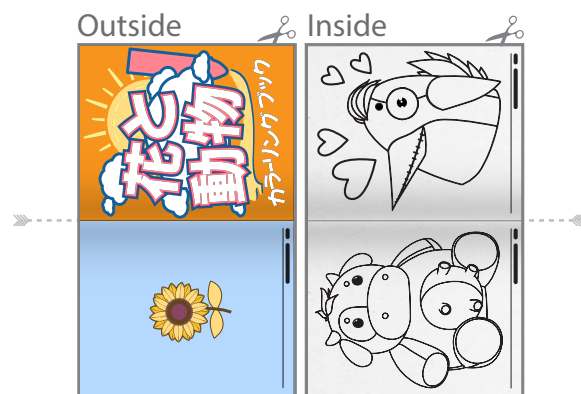
Toast



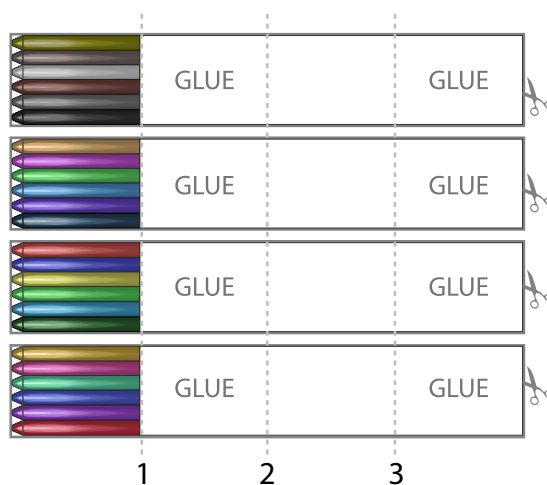
Cow Stationery



Coloring Book



Crayon Inserts





<div>Sayori</div> <div>History Skip Auto Save Load Settings</div>	<div>Sayori</div> <div>History Skip Auto Save Load Settings</div>
<div>Sayori</div> <div>History Skip Auto Save Load Settings</div>	<div>Sayori</div> <div>History Skip Auto Save Load Settings</div>
<div>Sayori</div> <div>History Skip Auto Save Load Settings</div>	<div>Sayori</div> <div>History Skip Auto Save Load Settings</div>
<div>Sayori</div> <div>History Skip Auto Save Load Settings</div>	<div>Sayori</div> <div>History Skip Auto Save Load Settings</div>
<div>Sayori</div> <div>History Skip Auto Save Load Settings</div>	<div>Sayori</div> <div>History Skip Auto Save Load Settings</div>
<div>Sayori</div> <div>History Skip Auto Save Load Settings</div>	<div>Sayori</div> <div>History Skip Auto Save Load Settings</div>
<div>Sayori</div> <div>History Skip Auto Save Load Settings</div>	<div>Sayori</div> <div>History Skip Auto Save Load Settings</div>
<div>Sayori</div> <div>History Skip Auto Save Load Settings</div>	<div>Sayori</div> <div>History Skip Auto Save Load Settings</div>

Instructions

General Note: For best results, use thicker paper when constructing items in this DIY Pack. The accessories in the example photo were printed on 32lb printer paper.

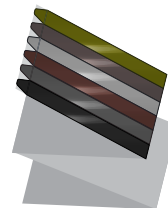
During the cutting stages of many of these accessories, certain reference lines or labels may be removed. For clarity throughout the assembly process, we recommend keeping a digital copy of the artwork and instructions available for reference.

Crayon Box & Inserts

- **Cut:** Carefully cut out the Crayon Box and the Crayon Inserts. Cut only along the bold outermost solid line, and keep all tabs intact.
 - **Optional:** For a more realistic and detailed appearance, carefully trim the crayon tips along the outermost solid line using a small precision scissor. This step requires a bit more patience and attention to detail due to the small size of the cuts.

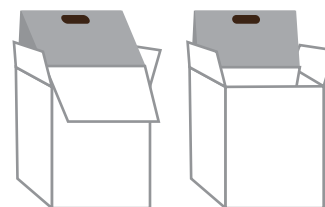
- **Crayon Inserts:** Please note that each Crayon Insert includes an attached blank strip. Folding this strip along the dotted lines in an accordion style will create a thicker backing, adding space between each of the (4) Crayon Inserts when fitting them into the Crayon Box, creating more dimension. The following steps will guide you through this process:

Begin by folding Line 1, bringing the blank strip behind the front of the crayon artwork. Then fold back at Line 2, and then fold again at Line 3, ensuring that the Crayon artwork remains visible on top. Press each fold flat to create crisp, even creases.



Please review the diagram (to the right) for visual reference of this step. Apply a thin layer of glue to the parts of the folded paper that overlap underneath the crayon art. This should create a thicker, sturdier backing for each Crayon Insert.

- **Crayon Box:** Fold along the dotted lines of the Crayon Box piece. Apply a thin layer of glue to tab (a) marked "GLUE" and gently press it to the inside the opposite side (b) to glue the two sides together, creating a box shape.
- **Bottom:** Fold in the two bottom tabs (Tab 3, Tab 4) Fold in Tab 5 and apply a thin layer of glue to the side of Tab 5 marked "GLUE". Gently press the glued side of Tab 5 to the backside of Tab 6 to glue the tabs together.
- **Top:** Fold along Fold O. Then, tuck down Tab 7 into the box.
 - **Optional:** For additional structural support, you may apply a thin layer of glue to the backside of Tab 7.
- **Finish:** Allow all pieces to dry before placing the completed Crayon Inserts inside the Crayon Box for dimension.



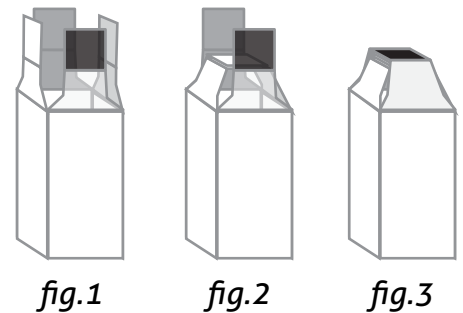
Juice Bottle

- **Cut:** Carefully cut out the Juicebox template. Cut only along the bold outermost solid line, and keep all tabs intact.
- **Fold:** Pre-fold along all dotted lines to shape the box.
- **Side:** Apply a thin layer of glue to tab (a) and press into the inside edge at side (b).
- **Bottom:** Fold in tab (i) and tab (j). Tuck tab (c) inside the box, behind edge (d) to close the Bottom.
- **Top:** This step is particularly tricky. Please reference the additional diagrams provided below for further visual guidance.

fig.1 Fold in tab (e) and tab (f). Slightly bend at Fold X so that tab (e) lays on top of tab (f). Apply a thin layer of glue to tab (f) before pressing tab (e) into tab (f). This should form a bridge-like shape.

fig.2 Then, fold in tab (h) and bend at Fold X so that tab (h) can be glued on top of tabs (e) and tab (f).

fig.3 Finally, bend the black tab that creates the top of the lid. Apply a thin layer of glue to tab (h), then gently press the black tab (top of lid) into tab (h) to glue together. Allow to dry.



Coloring Book

Option 1 – “Back-to-Back” Style Book

This method will create a slightly more flat book, without any “fluttering” pages. This method was used in the photo references, and is preferable if you intend to add color after assembling.

- **Cut:** Carefully cut out the Outside and Inside sheets along the bold outermost solid lines.
- **Glue:** Apply a thin layer of glue to the backside of the Outside sheet. Align the Inside sheet so the artwork faces the same direction as the Outside sheet once assembled. Gently press the Inside sheet onto the glued backside of the Outside sheet.
- **Finish:** Allow the glue to dry, then firmly crease down the center of both sheets.

Option 2 – Inner Seam Style Book

This method will create a more “hinged” book with dimensional, “fluttering” pages.

- **Cut:** Carefully cut out the Outside and Inside sheets along the bold outermost solid lines.
- **Glue:** Apply a thin line of glue down the inner seam of the Outside sheet.
- **Finish:** Gently press the Inside sheet into the glued seam, making sure the edges are aligned neatly. Allow to dry.

Corkboard

- **Cut:** Carefully cut out the Corkboard piece along the bold outermost solid lines to be used as a display or backdrop.
-

Pennant Banner

- **Cut:** Carefully cut out the Pennant Banner along the bold outermost solid lines.
 - **Optional:** The “string” portion of the banner that holds the pennants (flags) together is constructed with paper in the full artwork provided. For a more realistic look, you may consider cutting away the paper “string” and replacing it with your own string of a similar size.
 - **Display:** Hang as decoration or layer onto another surface. Tape or another non-glue adhesive method is recommended for easy re-positioning.
-

Toast

- **Cut:** Carefully cut out the toast shapes along the bold outermost solid lines.
-

Cow Stationary

- **Cut:** Carefully cut out the stationery sheets by cutting along the bold outermost solid lines.
-

Sayori's Journal

- **Cut:** Carefully trim out the Journal sheet along the solid edges.
- **Fold:** Crease along the dotted center line to form the booklet shape.